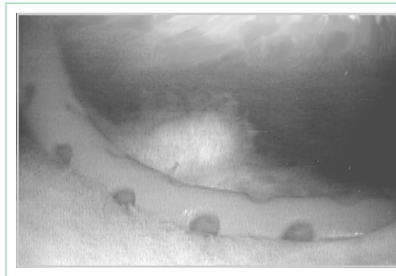


ClearVu™ 2.7 Flexible Inflow-Outflow Cannula



The first true innovation in inflow-outflow cannula design, the Cannuflow® ClearVu™ 2.7 significantly enhances fluid flow and image clarity in three-portal arthroscopic knee procedures over the use of a traditional rigid metal cannula. Engineered to bend with an articulating joint, the ClearVu also improves patient safety by reducing the potential for soft tissue and articular surface damage during a procedure. The progressively flexible design of the cannula:

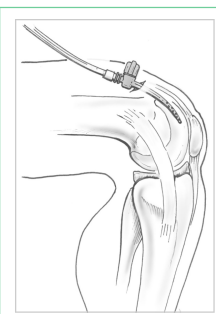
- delivers uninterrupted, high flow rates for consistently clear visibility
- protects against scratching, gouging, or denting of articular surfaces
- assures no 'short outs' of RF devices



Flexibility ensures high-volume flow rates with unrestricted irrigation

Consistent clarity and safety

Unlike a rigid metal cannula, the patented Flex-Flow™ design of the ClearVu allows the cannula to easily conform to the contour of a knee joint through a full range of motion. ClearVu requires no repositioning to maintain exceptional fluid flow and safety when manipulating a knee – even in a figure-four position.



Reduces repositioning, protects articular surfaces

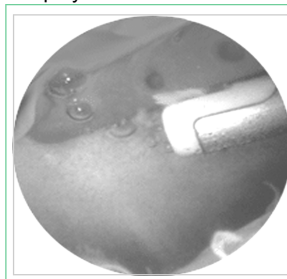
Greater flow, smaller OD

The highly efficient tapered configuration of the ClearVu delivers reliable flow rates of up to 1.0

liter per minute using just gravity in a much smaller OD – no need for a *bigger* cannula to get *more* flow.

No more RF 'short outs'

The non-conductive polymer construction of the ClearVu will not interfere with radio frequency (RF) or thermal remodeling devices even upon direct contact.



Eliminates time-consuming RF 'Short Outs'

“Not only does it allow a continuous flow, it also does not damage the articular surfaces should it get impinged between the patella and trochlear notch.”

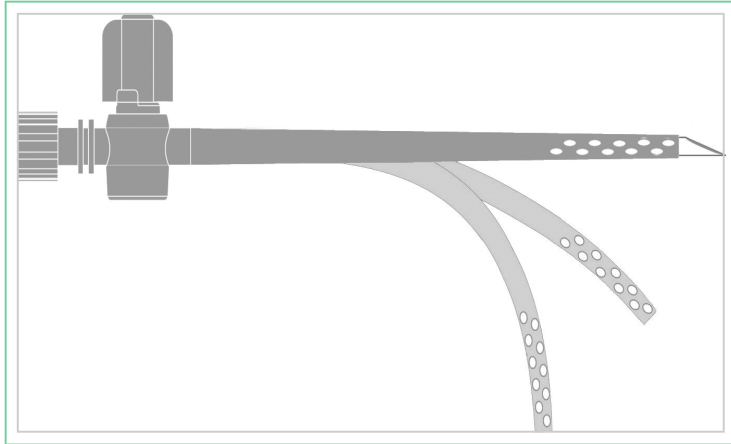
Martin Trieb, MD
Orthopaedic Surgeon
Arthroscopy & Sports
Medicine Clinic

“The fact that it is flexible allows more than adequate fluid flow in all the ranges of motion and is also less harmful to the patient’s soft tissue.”

Grady L. Jeter, MD
Orthopedic Surgeon
Arthroscopy & Sports
Medicine Clinic

“An advantage is the ClearVu is compatible with bipolar electrode...the device will not ground out if I touch it, nor is the cannula damaged in any way by the device.”

Frederic J. Collins, MD
Orthopedic Surgeon



Progressive Flexibility

The progressively flexible geometry of the ClearVu cannula is stiffer at the proximal end for strength and control. It is more flexible at the distal tip for following anatomical contours and movement. The larger number of fenestrations at the distal tip and open cannula end ensure high-volume throughput and efficient debris evacuation regardless of the placement of the joint. The ClearVu cannula adapts readily to existing equipment and offers a variable rate flow control valve. In addition, the proximal end accepts all universal luer-lok and tubing-set attachments.

Technical Specifications:

- Flow Rate: 0-1.0 liters/minute, stopcock controlled
- Flexibility: 0-90 degrees, non-kinking
- Inside diameter: 2.7mm
- Outside diameter (sheath) 5.6mm max, 3.1mm min
- Working length 8.5cm
- Packaged sterile, single use
- Proximal end: male luer and slip-on tubing set connection

Materials:

- Cannula—HDPE, USP Class VI.
- Trocar—303/304 Stainless steel
- Latex free

Packaging:

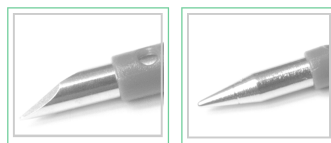
- Single sterile unit
- Box of 10 individually-packaged cannula
- Assembled and packaged at ISO 9000, FDA registered facility

Sterilization Method:

Radiation, Gamma

Product Choices:

- Sharp Trocar —Ref # CV27-S
- Blunt Obturator —Ref # CV27-B



Cannuflow Incorporated
 1190 Coleman Ave, Suite 250
 San Jose, California 95110
 408.764.0220
 866.484.5400 toll free
 408.280.0323 fax
www.cannuflow.com

Cannuflow is a registered trademark and ClearVu and FlexFlow are trademarks of Cannuflow Incorporated.

© 2006, Cannuflow Inc.
 ALL RIGHTS RESERVED.
 06-007-04